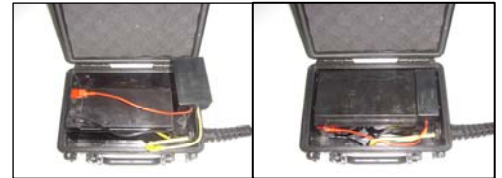


# Higdon Pulsator Decoy



## Decoy Operation:

1. To operate the Pulsator, simply plug together the color coded connections: Inside the box connect the YELLOW wires together and the black wire to the black post on the battery and the red lead out of the timer to the red post on the battery (diagram at right...picture on left). Finally, position the battery and timer in the box and close the lid. (diagram at right...picture on right)



2. Next, make sure that the keeper wire coming from the decoy is slid over the bilge pump power source wire. This ensures that the bilge pump is not accidentally lost in the event of detachment. Now the bilge pump is ready to attach to the decoy (diagram at right). Simply snap together.



3. Next, take the wire from the decoy and pump unit and connect it with the end of the wire coming from the battery box. Plug the two ends of the cords together and you should hear the unit turn on (cycling on and off). After this, simply drop the unit into the water and the weighted battery box will actually serve the purpose of your decoy weight so there is no need to run wires back to your blind or any other additional set-up.



4. The optional clear rubber tubing piece can be inserted into the discharge pipe for varying differences in water spray, decoy movement and ripple effect. Also, the 45 degree PVC attachment can be used instead of the long, curved discharge pipe. To use the 45 degree PVC piece, remove the curved pipe by unscrewing the two screws that attaches the curved pipe and replace it with the 45 degree PVC. This allows virtually no water spray at all and promotes maximum movement of the decoy. Perfect for really still days.

## Decoy Cleaning Maintenance

1. The bilge pump and pipe can easily be taken off the decoy for cleaning in case of debris clogging up the bilge pump.
2. To clean, simply unsnap the bilge from the bottom of the decoy.
3. Clean out grass and debris.
4. Once the bilge is running properly, snap bilge pump back on.

## Other tips:

1. For re-charging the battery, overnight charging (around 7 hours) after each hunt is recommended to keep the battery in good condition. The main thing that you want to take care of is the rubber gasket around the edge of the box. To protect the seal on the box clean it with water. Do not use any solution like Vaseline to clean. Before storing for the off season clean seal with water and leave the box open. This seal is what keeps the water out of the box. With that said, you might find a little condensation after time in the box. This is normal and will not affect any internal parts of the battery box. Thru manufacturing, we went thru the effort to make all internal components waterproof as well just in case this happens.
2. For storage of the battery: charge fully and keep at room temperature during the off season.
3. 10 foot extension cords are available on our website and at your local dealer. You can also purchase batteries, bilge pumps, chargers, keepers, timer and any other Pulsator parts off our website. When you purchase the 10 ft. extension cord there will be one end of the cord with a green marker. This attaches to the wire coming out of the battery box with the green marker. All connectors on the Higdon Pulsator are color coded.
4. Please visit our website, [www.higdondecoys.com](http://www.higdondecoys.com) for product display, set up and parts.